

HT 1800 WING GUARD INSTALLATION INSTRUCTIONS

Remove and discard the sidestand and hardware (pic #1)

Note: tie off the sidestand switch in the “up” position.

Remove and discard the centerstand- save the two mounting bolts only. (pic #2)

Note: the bolt on the right side is a LEFT hand thread.

Install the two tube clamps on to the crash bars as shown (pic #3)

Note: install the clamps with welded nut facing forward.

Install the front upper mounting brackets on to the tube clamps (pic 4)

Note: Use the 5/16” x 1” bolts with flatwashers, for now, tighten the bolts just enough to allow movement of the brackets.

Install the left rear mounting bracket (pic #5)

Install the right rear mounting bracket ((pic #6)

Note: If there is a boot already on the parking brake lever, remove and discard it and the hardware.

Install the center mounting brackets (pic’s 7,8, & 9)

Note: Use the two bolts that were save from the centerstand, remember that the bolt on the right side is a LEFT hand thread, install the provided spacer as shown.

Install the provided parking brake lever boot as shown (pic #10)

Install the peel and stick foot mats

Install the push on trim along the rear edge of the wing guards

Note: there is a bead of adhesive already in the groove of the trim, LIGHTLY tapping it will help it stick.

Apply some masking tape to the front mounting area on the wing guards (pic #11) and set the wing guard in to place, after checking for correct fit (while pushing the wing guard against the trike body) mark the front mounting holes- the center of the slot with the bracket flat on the wing guard. Remove the wing guard and drill through the marks with a 9/32” drill. Remove the tape and carefully re-install the wing guard. Install the front mounting bracket bolts (1/4” x 1 1/4”) but do not fully tighten them yet. Repeat this procedure on the remaining side.

Drill a 9/32” hole through the wing guard and the trike body as shown (pic #12)

Note: Make sure that the wing guard is in the correct position while drilling

Note: The bolt should end up either even with, or slightly forward of the tire- make sure it doesn’t rub.

Install the 1/4" x 1 1/2" chrome buttonhead bolt, chrome flatwasher, and rubber washer in to the drilled hole while installing enough 1/4" std washers on the bolt, between the wing guard and the trike body to fill the gap – so that when tightened, there is slight pressure on the rubber edge trim.

Tighten the front mounting bracket bolts (pic #13)

Note: Tighten the bracket to wing guard bolts and the bracket to tube clamp bolts

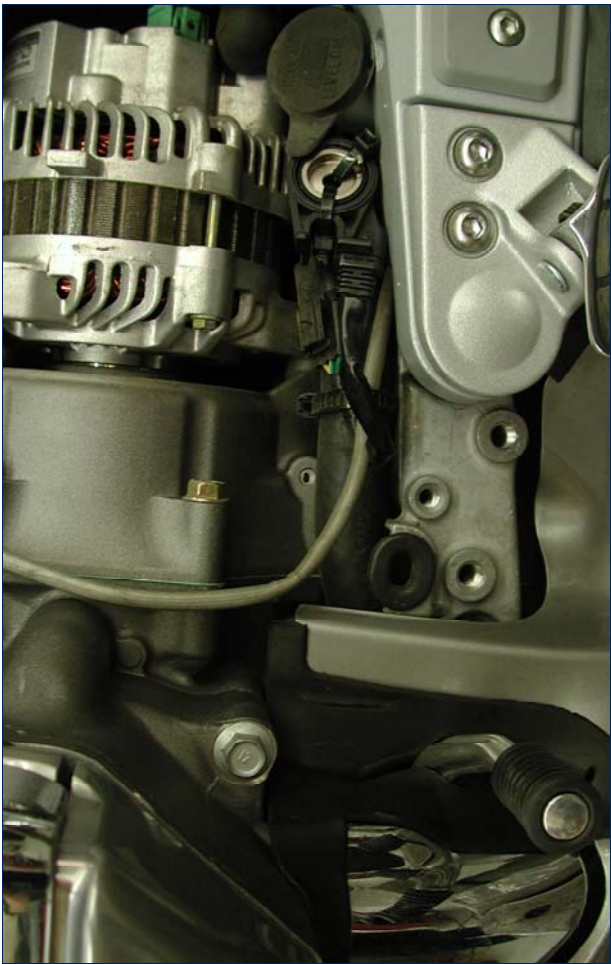
Drill 11/32" up through the rear wing guard mounts to install the 5/16" chrome buttonhead bolts and chrome washers. (pic #14) Tighten them.

Drill 9/32" up through the center mounting brackets

Note: To keep from lifting the peel and stick foot mats as you drill through, press down on a piece of wood over the holes as you drill them.

Install the 1/4" x 1 1/4" chrome buttonhead bolts, chrome washers and nylon washers (pic # 16)

Note: place the nylon washers between the flatwashers and the peel and stick mats.



1



2



3



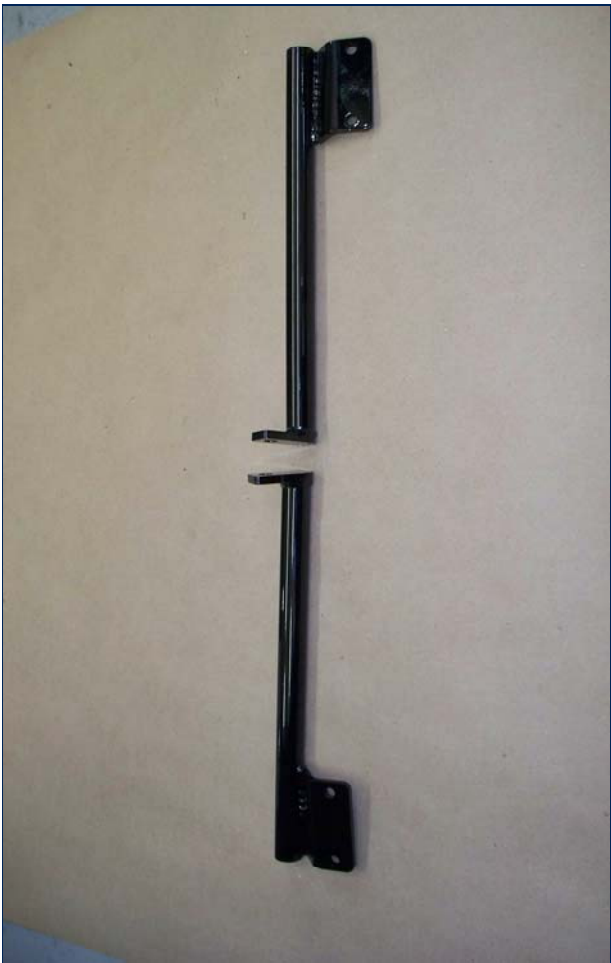
4



5



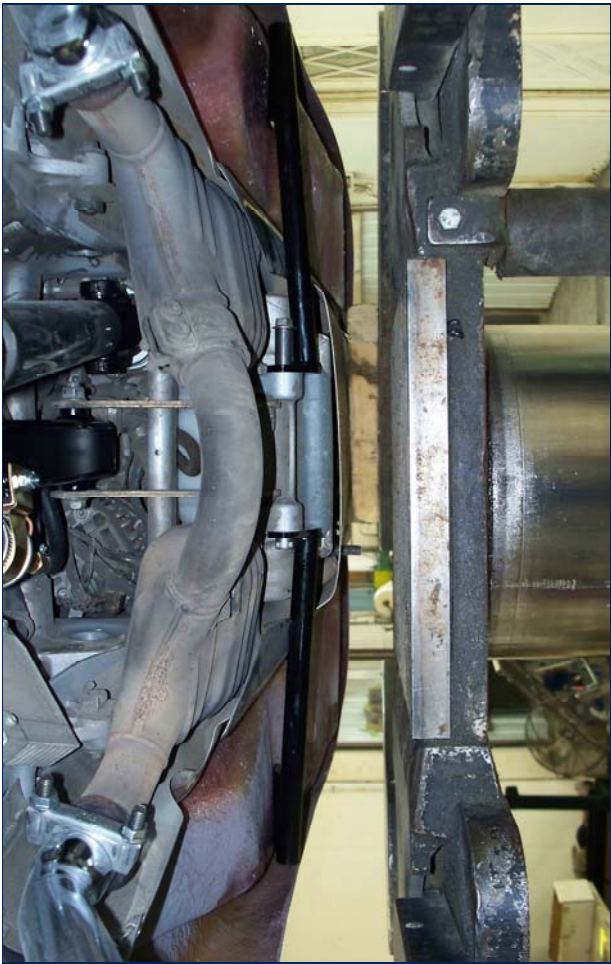
6



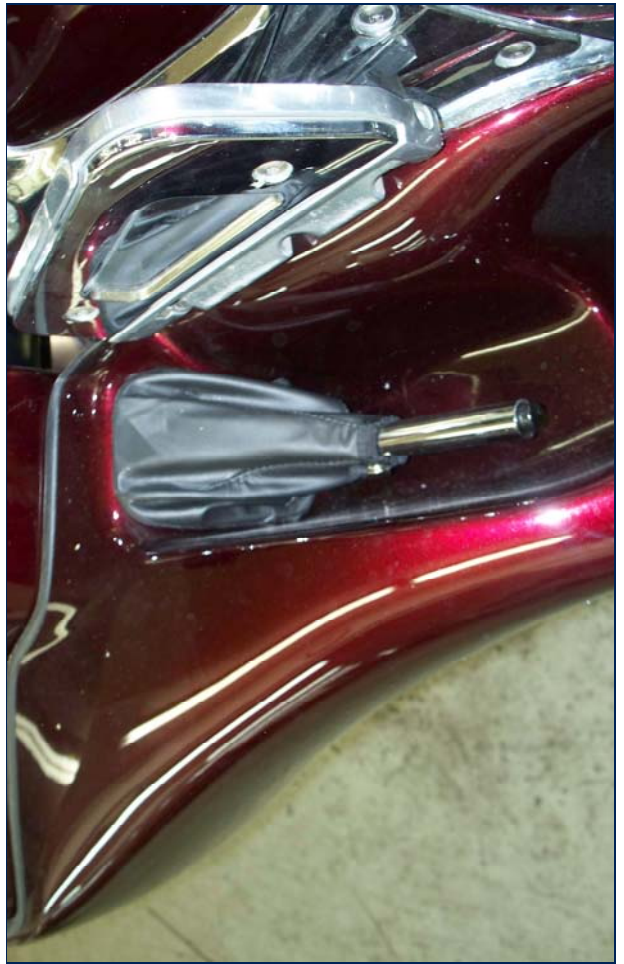
7



8



9



10



11



12



13



14



15



16